

## 12 Howe Street, Edinburgh, EH3 6TD

A main door traditional Victorian flat in Edinburgh's New Town is a rare find. Located on one of Edinburgh's fine cobbled streets', this flat has an air of timeless elegance, due to its historical roots and all that is associated with its era. Private access is granted to Queen Street gardens, a much sought after benefit, afforded to only a few.





## All that Edinburgh has to offer is on the doorstep

*"Owning an apartment in the New Town has been a godsend to our family, the most perfect location"*

- Private access to Queen Street Gardens
- Main Door Victorian Flat
- Grand Entrance Hallway
- Spacious and flexible accommodation
- Period features
- 3 Double Bedrooms
- 2 Bathrooms
- In the UNESCO World Heritage Site

# 12 Howe Street, Edinburgh, EH3 6TD

12 Howe Street,  
Edinburgh,  
Midlothian, EH3 6TD



Gross internal area (approx)  
**147.25 sq.m (1585 sq.ft)**

For Identification Only. Not To Scale.  
© SquareFoot 2024.

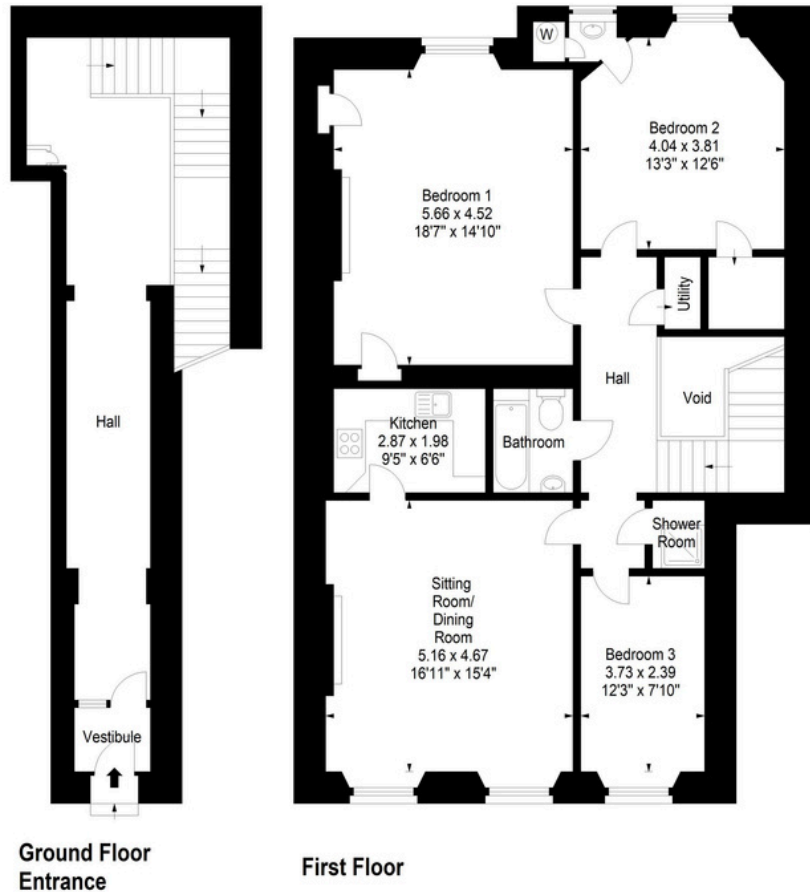


Illustration for identification purposes only, measurements are approximate, not to scale

To arrange a viewing, call  
**+44(0)131 287 5500** or email us  
at [hello@niksenproperty.com](mailto:hello@niksenproperty.com)