

## 72 Woodfield Avenue Colinton EH13 0HX

The redesign of this home has been meticulous; it has been entirely re-imagined and elevated ensuring that day to day family life can be simplified. This is a 4-bedroom semi-detached home in a popular Edinburgh suburb, it provides great space, excellent finishing and clear attention to detail throughout.



4



2





## Sought after suburban location, perfect for families

- House Bathroom & En-suite
- Driveway Parking
- EV Charging
- 4 Bedrooms
- Bi-fold doors leading to private garden
- Wood burning stove
- Entrance Vestibule
- Attention to detail throughout

# 72 Woodfield Avenue, Colinton, EH13 0HX

Woodfield Avenue,  
Edinburgh, EH13 0HX



Approx. Gross Internal Area  
117.15 Sq M - 1261 Sq Ft  
For identification only. Not to scale.  
© SquareFoot 2025

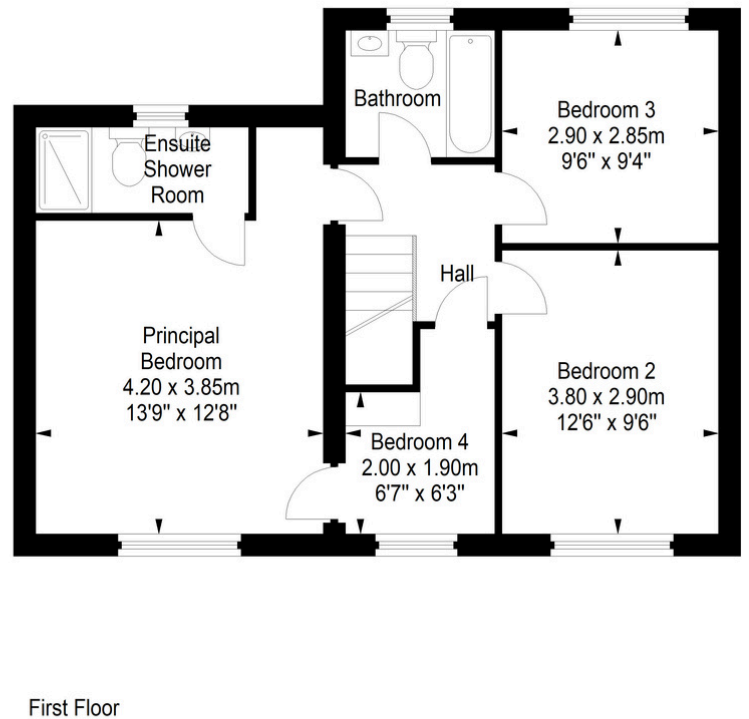
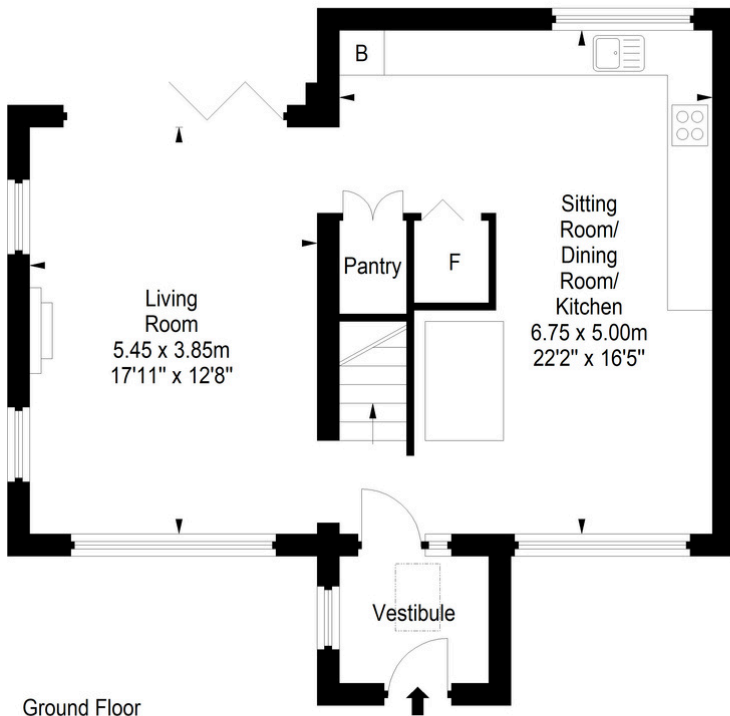


Illustration for identification purposes only, measurements are approximate, not to scale

To arrange a viewing, call  
**+44(0)131 287 5500** or email us  
at [hello@niksenproperty.com](mailto:hello@niksenproperty.com)