

Flat 12 Craighouse Edinburgh EH10 5FB

Niksen are proud to introduce this 2 bedroom apartment, housed within Craighouse - a converted 19th century building in the heart of Edinburgh's charming Morningside.

The apartment occupies the crown of what was once a grand 19th-century building, known for its classical stone façade and architectural significance. Now re-imagined for modern living, the space retains its character with a sympathetic nod to its storied past.





A perfect marriage of heritage and contemporary luxury

- Main Door Apartment
- Allocated Parking Space
- Set in 52 acres of parkland
- 2 Bedrooms
- High Quality Bathroom
- Solid Oak Flooring
- Designer Kitchen
- Original Features
- Exclusive residents use of the Great Hall
- In the heart of Edinburgh's charming Morningside

Flat 12, Craighouse Edinburgh, EH10 5FB

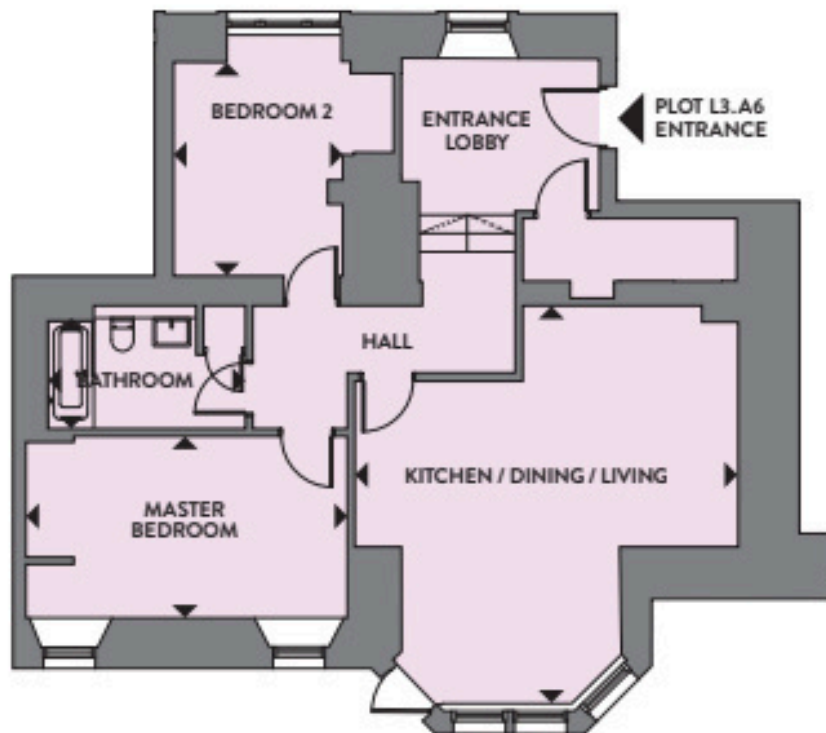


Illustration for identification purposes only, measurements are approximate, not to scale

**To arrange a viewing, call
+44(0)131 287 5500 or email us
at hello@niksenproperty.com**