

## 2 Fair-A-Far Cottages, Edinburgh, EH4 6PQ

A simply beautiful 1-bedroom main door cottage-style apartment, with Scandinavian elegance.

This home has been curated by the current owner who has put her interior design background into full swing. Consideration and a keen eye for design is on display in every square inch, whilst at its heart it is a welcoming home.



1



1





## Design-led living with a relaxed and cozy atmosphere.

- Main door cottage style apartment
- Private garden
- Beautifully presented
- Sought-after neighborhood
- Attention to detail throughout
- Open plan living kitchen
- Bespoke carpentry
- Within walking distance of the banks of River Almond

## 2 Fair-A-Far Cottages, Edinburgh, EH4 6PQ

Fair-A-Far Cottages,  
Whitehouse Road,  
Edinburgh, EH4 6PQ



Approx. Gross Internal Area  
38.65 Sq M - 416 Sq Ft  
For identification only. Not to scale.  
© SquareFoot 2025

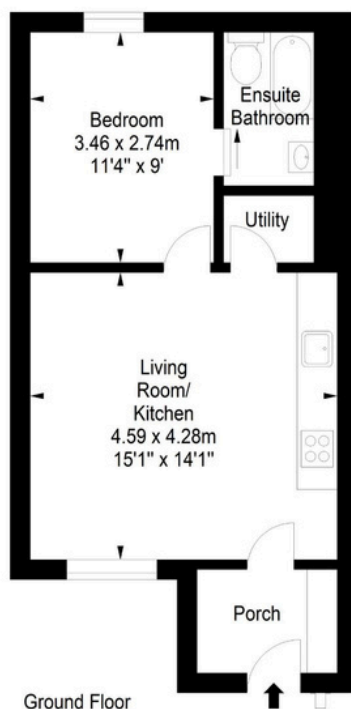


Illustration for identification purposes only, measurements are approximate, not to scale

To arrange a viewing, call  
**+44(0)131 287 5500** or email us  
at [hello@niksenproperty.com](mailto:hello@niksenproperty.com)